

# SEA EAGLE<sup>®</sup>.com



## Sea Eagle<sup>®</sup> FoldCat<sup>™</sup>

375FC

Instruction & Owner's Manual  
For video instructions visit [SeaEagle.com/Instructions](http://SeaEagle.com/Instructions)

**Sea Eagle Boats Inc.**  
19 N. Columbia Street, Suite 1  
Port Jefferson, NY 11777  
1-800-748-8066

November 2018



## **Congratulations on purchasing a Sea Eagle!**

With over 45 years of experience in designing, selling and using these quality inflatables, we're confident that you are going to love your Sea Eagle and we're ready to proudly stand behind them.

### **Sea Eagle Warranty**

All Sea Eagle products come standard with a 3 year warranty against manufacturing defects. The warranty begins the date that your product is delivered. Sea Eagle must inspect equipment in order to determine if there is a defect. In the event that an item must be shipped back to us, Sea Eagle will only reimburse the standard return shipping charge through FedEx, UPS, or U.S.P.S. at published shipping rates. Fees charged by retail shipping outlets, like The UPS Store, will not be reimbursed and you are responsible for handling and packing charges.

Sea Eagle will refuse delivery on packages without a valid return authorization number and will not be responsible for shipping or handling charges. To obtain a return authorization number, please contact Sea Eagle directly, unless you purchased from an authorized dealer/reseller in which case contact them for more information.

If you receive a damaged item, please call the shipping carrier to report the issue. Do not return damaged merchandise until it has been inspected by the carrier. Sea Eagle will be notified by the carrier when they have completed their inspection and if necessary, Sea Eagle will arrange for the repair or replacement of damaged merchandise.

See complete warranty details at [SeaEagle.com/Warranty](http://SeaEagle.com/Warranty).

### **Decals, Stickers & Registration**

Always contact your state boating authorities for information on boating registration and regulations. Most states require you to register your boat if you are using a motor.

Upon registration it may be required to provide the Manufacturer's Statement of Origin. Purchases made through an authorized dealer or reseller may require for you to contact them directly in order to obtain this. You may be charged your own state sales tax if you were not charged sales tax at the time of purchase.

Registered boats generally require for the registration number to be applied to the boat. We do not recommend the use of decals or stickers as they tend to crack and peel over time with the repeated inflation and deflation of your Sea Eagle. Instead we suggest applying these numbers to a small piece of hard plastic or marine plywood and hanging it from your boat like a license plate if permitted by your state. Another method is to apply the numbers to the hull using either PVC based paint or permanent marker.

### **Contact Us**

Unlike many other companies today we pride ourselves on answering the phone and helping you with any concerns, questions or special ordering needs that you may have!

Feel free to give us a call at 1-800-748-8066 and we will be happy to talk with you! Our business hours are Monday to Friday from 9-5 (EST).

**Sea Eagle Boats Inc.**  
19 N. Columbia Street, Suite 1  
Port Jefferson NY 11777  
1-800-748-8066  
[Staff@SeaEagle.com](mailto:Staff@SeaEagle.com)

## MOTORING

The Fold Cat pontoons are large diameter which gives the boat plenty of flotation. Large pontoons raise the height of the motor mount, we therefore recommend a using a 20" long shaft gas motor with the boat for maximum performance. The motor mount should be installed in the lowest position.

Any power rating under 3 hp is recommended. Adding more power will not increase speed, in fact the motor can only be used up to approximately one-third throttle. More throttle will cause the motor to sound like it is straining and cause it to shake. Overpowering will also waste fuel. Gas motors typically have a much greater range than electric motors.

Trolling motor power is measured in pounds of thrust and battery draw. A motor rated at 30 lbs thrust consumes approximately 30 amps at full throttle. They typically are far less powerful than a gas motor but provide adequate power for a light weight inflatable boat such as the FoldCat. Most trolling motors have a maximum speed of about 4 mph. The propeller is pitched to maintain this speed and not faster. A larger trolling motor, a 55 lb thrust motor for example, will push a boat faster in a headwind, but not faster in calm water or against a current. Most trolling motors consume much less than 30 amps at lower throttle settings. We measured the Watersnake Venom at 12.4 amps at the number 3 setting for example.

To calculate the range that can be expected from a battery, divide the amp hour rating of the battery by the amperage rating of the motor. For example a Group 24, 77Ah battery paired with a Minn Kota 30: 77 Ah divided by 30 amps yields 2.5 hours at full throttle.

A 12v deep cycle marine battery, lithium ion battery, personal watercraft battery or electric vehicle battery is acceptable. The important parameter is the battery's ampere hour (Ah) rating. A Group 27 battery or smaller is recommended.

- Charge battery after each use. Lead acid batteries like to be kept charged.
- Running the battery all the way down will shorten its life.
- Exposure to excessive heat will shorten battery life.
- Cranking amps (CCA) are not a consideration.
- 12v automobile, lawn tractor and motorcycle batteries can be used but are not designed for deep discharge so will wear out more quickly.
- A battery box is recommended especially around aluminum crossbenches or oar shafts which could cause an electrical short.
- A circuit breaker or fuse is recommended (required in some areas) to prevent damage in the event the motor wires are placed on the wrong terminals. Reversing the polarity can cause the wires to heat up, melt the insulation, and cut through the boat.
- A 12v battery charger will be needed. Chargers are widely available.
- If available, choose gel cell over wet cell. Wet cell batteries have liquid acid inside them.
- Marine batteries are heavy, choose one you can carry without injury.
- Expensive batteries can weigh less and last longer because of their superior internal architecture.
- Battery can be secured to the aluminum crossbenches or placed on the black PVC floor.

Follow manufacturer's safety procedures.

## DISPLACEMENT HULL

In addition to motor type, there are factors that regulate how fast a boat can go. Two important factors are boat length at the waterline and planing. Under most conditions the FoldCat cannot plane, it is considered a displacement hull. The FoldCat's length limits the hull speed to below 8 mph. For further information, search the internet for "displacement hull speed."

On a river or in a tidal inlet, if the current exceeds approximately 8 mph, you will not be able to make progress relative to land and in fact will be swept backwards. Adding a larger motor will not make a displacement hull exceed its hull speed, steer to calmer water, portage, or await a tide change.

### WEIGHT BALANCE

Distribute the weight of passengers and gear evenly in the boat. The boat should not be leaning side to side nor fore and aft (front to back). This may require moving some items, like a trolling motor battery forward as much as possible. Note: the floor can easily support the weight of passengers or a battery. The "No Standing" label is to prevent tripping on the crossbenches.

### DANGER

To avoid injury if you or a passenger falls overboard, approach the boat on the side opposite the motor. See re-entering instructions on page 15. Do not smoke around open gasoline containers. Avoid spilling gas.

Gas powered motors produce carbon monoxide which can cause asphyxiation. Avoid breathing exhaust.

### ROWING

Due to its light weight, the FoldCat is surprisingly easy to row. Clearance is limited so you must have your legs straight or the oars will hit your legs. If you are new to rowing it may seem easy enough, but it will take some practice to coordinate the strokes. There are many online articles and videos to aid in learning.

The boat can be rowed in either direction, but rowing is most efficient when pulling on the power stroke which propels the rower backwards. Make it a habit to look behind you frequently to check for hazards and to make course corrections.

*The FoldCat is not intended for rowing in flat water such as lakes and bays. Always bring the oars even if you have a motor. (????)*

### DAMAGE

The FoldCat is tough and durable but it can be damaged. Sticks and rocks typically don't puncture the FoldCat, but discarded metal, nails in floating docks and oyster beds can puncture.

A lot of damage can be done dragging the boat. This is true while it is in the bag too. It is better to carry than to drag a Fold Cat, but especially avoid dragging the FoldCat on concrete or asphalt. The boat can be pushed off the shore and return to shore and pulled aground. This should not damage the FoldCat, but care should be taken to avoid hazards that could cut or puncture.

Fish hooks rarely puncture a boat because they are recurved, but fish spines can make small punctures. Hold fish off the pontoons and land fish on the black floor.



## Safety

In a manual of this type it is impossible to give adequate space to the topic of water safety. For further information on boating safety, visit [USCGBoating.org](http://USCGBoating.org) or enroll in a water safety course given by a local provider.

It is your responsibility to be aware of and comply with all relevant safety regulations. For all water recreation or sport you should have a reasonable swimming ability. Just as swimmers have a cardinal rule about not swimming alone, it is strongly advised that you should never go boating alone.

## Boating Safety Tips

- Always wear a USCG approved PFD (life vest) at all times while on the water.
- Be aware of your local boating rules and regulations and abide by them accordingly.
- Check inflation levels each time before you go out and inflate your boat for a full 24 hours before undertaking long trips.
- DO NOT allow children to use Sea Eagle unsupervised.
- DO NOT consume alcohol while boating or operating a boat while under the influence of alcohol or drugs.
- DO NOT drag your Sea Eagle over rocks or gravel if it can be avoided.
- DO NOT exceed the certified maximum capacities of this boat under any circumstance.
- DO NOT go boating alone.
- DO NOT use compressors, CO2 or compressed air for inflation, only use Sea Eagle recommended pumps.
- DO NOT use your Sea Eagle Boat as a personal flotation device as they are designed for leisure/recreation in mind.
- DO NOT sleep inside of your Sea Eagle while on the water.

## Safety Equipment

The type of water conditions you are on should determine the type of safety equipment that you should have on board. For all types of boating we strongly recommend that every passenger wear a USCG approved PFD (personal flotation device) like a life vest. In most places this is a requirement by law, but from our point of view it is also an exercise of good judgment to have a PFD for all passengers.

Other important items to consider for all types of boating...

*Drinking Water & Snacks:* Kayaking is a physical activity that can work up both a thirst and a sweat and especially on a hot or warm day it is a good idea to have drinking water readily available to you to prevent dehydration. Bring a good amount of water for all passengers as you want to avoid drinking the water you're kayaking in which may be full of contaminants.

*Extra Clothes/Layers:* You never know when the weather can change and it's a good idea to come prepared with extra clothing. If you have a dry (waterproof) bag than we recommend storing them inside so they're not damp in case of emergency.

*First Aid-Kit:* The contents of the kit may vary depending upon your preferences, but make sure to carry a kit that reflects the possible dangers for the conditions you are in.

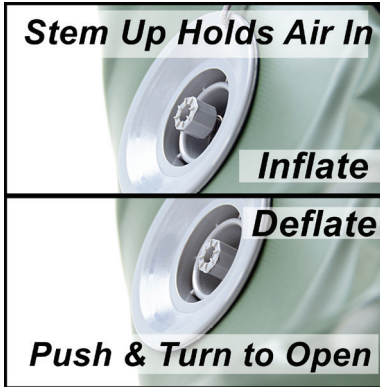
*Foot Pump/Repair Kit:* Although our boats are both durable and rugged, it may be possible that you need to make a repair while on the water in which case you'll need the repair kit and the foot pump to re-inflate the boat. If this is your first repair, you may also want to bring this instruction manual with you.

*Sun/Rain Protection:* A hat can protect both your face and head from the rain or sun. You may also want to carry sunscreen with you as both the sun and the sun's reflection from the water can do serious damage to your skin. If you are out for prolonged periods of time you may need to reapply sunscreen as needed.

*Whistle:* Having a whistle readily available to you in case of emergency is a great way to attract the attention of others if assistance is needed.

*Float Plan:* Similar to a pilot's Flight Plan, consider having a Float Plan ([www.floatplancentral.org](http://www.floatplancentral.org)). Always tell someone where you are going to be boating and what time you plan to return. Keep a cell phone in a waterproof container that will float if it falls in the water.

# INFLATION, VALVES & PUMPS



**Recessed Air Valves**  
Remove the cap and press and turn the valve stem counterclockwise so that the stem is in the UP position. When the stem is in the up position the valve will retain air. Turn the stem clockwise and down to valve for deflation.



**BTP Turbo & BP12 Electric Pumps (OPTIONAL)**  
These electric pumps come with a nylon shoulder carry bag, 12V DC power cord, hose and adapters.



**A-41 Foot Pump**  
Unwrap the hose and press the two halves to release the clip. Screw the hose into the OUT port. Foot pump rapidly inflates boat. Cannot not over inflate boat with foot pump.



**WARNINGS:** Keep out of the reach of children. Don't leave running unattended. Do not use inflator for more than 20 minutes continuously as this can cause overheating and damage.



**Recessed Adapter**  
The recessed valve adapter is located inside of the orange repair kit canister. Insert the ribbed end of the valve adapter into the hose on the foot pump.



Locate the gray adapter with red gasket. Press and twist this adapter firmly onto the gray tube at the end of the black hose. The tube is glued in, do not try to remove it.



When ready to inflate, insert valve adapter and twist clockwise to lock in. The adapter has a bar that will hold the valve open for easy pumping. Do not inflate until underbars are installed.



Also included are a cluster of seven valve adapters, with raised numbers on each arm of the cluster. The adapter marked number 1 is the only adapter needed for your Sea Eagle.

# INFLATION, VALVES & PUMPS

Take adapter number 1 from the cluster and firmly push it into the grey tube that is already connected to the end of the hose. To ensure that the adapter is on as tight as possible, push it past the raised ring that is inside of the adapter.



Connect the cord at the end of the power supply into the end of the cord attached to the pump.



**BTP Turbo Pump**  
Connect the other end of the hose to the red inflation port at the top of the pump, located near the ON and OFF buttons. PSI numbers are red.



Connect the Turbo Pump to a 12V battery (car or marine) using the alligator clips at the end of the extension cord. Connect the red clip to the positive pole and the black clip to the negative pole.



**BP12 Electric Pump**  
Connect the hose to the red inflation port in the end of the pump. PSI numbers are yellow.



Press the ON button to begin inflation. The pump operates in two stages which can be identified by the noise of the turbine at the start, followed by the piston. The pump automatically stops once the pressure is reached.



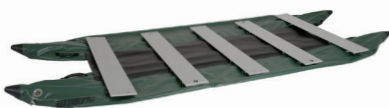
Adjust the pressure dial to read 3.2 PSI which is the operating pressure of your Sea Eagle. PSI is marked in red on the dial. Never turn the dial when the device is under pressure as this will immediately cause the instrument to break.



**Warning:**  
Air compressors that are designed for other uses like tire inflation (usually around 50 PSI) can easily harm your Sea Eagle which works at a much lower pressure of 3.2 PSI. For this reason we recommend only using Sea Eagle pumps.



# ASSEMBLY & INFLATION



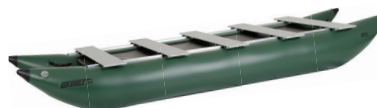
Locate an area large enough to unfold the boat. Avoid hazards that could damage the boat or injure you. If out of alignment, slide crossbenches so they are centered on the hold-downs.



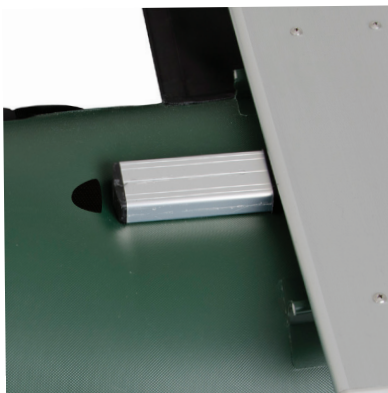
Insert the adapter into the valve, turn it to the right until it locks in the opening. Valve stem must be in the UP position. **Note:** if adapter it too tight to turn, stretch rubber gasket until pliable and retry.



**Stabilizer Underbars**  
Insert underbars under the crossbenches, two in the front, two in the rear.



Pump until very firm. Pontoon should be very tight with almost no wrinkles. Floor will be stretched tight between pontoons. Use firm even strokes, do not stomp on pump. Finished when very firm resistance from foot pump is felt.



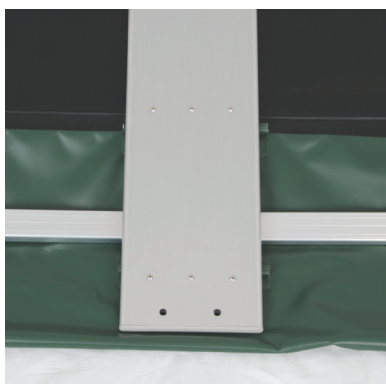
Align the ends of the underbars in line with the triangular markings on each pontoon.

**Note:** Bars might not touch markings.



### Swivel Seat

The 375FC has two basic seating positions with one at the rear and the other at the front.



When properly aligned, the underbars should line up underneath the center crossboard. Bars may not touch under crossboards. Once they are in place, finish inflating the boat to full capacity.

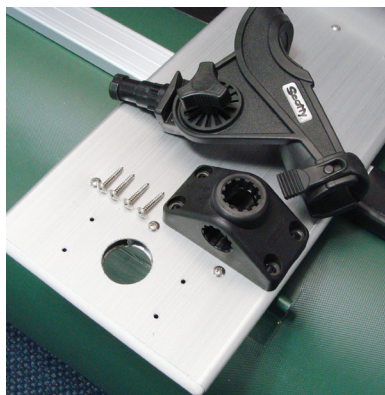


Quick Release Seat Mount comes with four 2" bolts and four wing nuts. A Phillips head screwdriver (not included) is needed to complete installation. The mount can remain attached when being folded for storage and is a one-time assembly.

## ASSEMBLY & INFLATION



Position the mount over the pre-drilled holes designated for it and bolt the mount to the floorboard using the bolts and wing nuts. Locking tongue should point to side of boat.



### Scotty Rod Holder

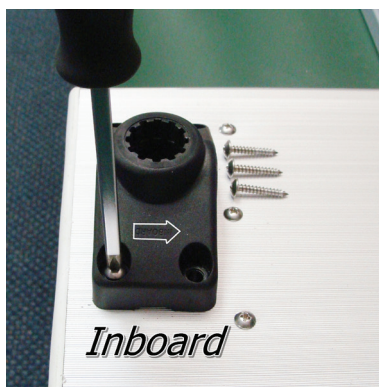
Holds a bait caster reel in a cushioned cradle. Slot in the front allows for a spinning reel to be securely held in place. Includes side/deck mount. A Phillips Head screwdriver (not included) is needed.



### Pedestal (OPTIONAL)

The pedestal is included in several FoldCat boat packages and includes four 1/2" bolts and four wingnuts. The 375FC can be fitted with up to two pedestals.

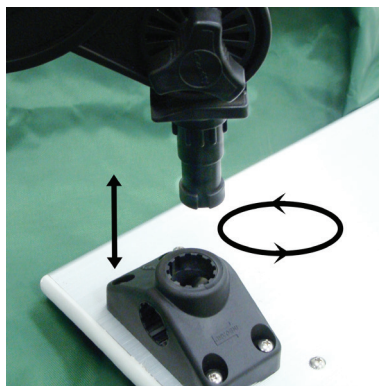
**Note:** Make sure that all hardware is secured tightly before every use.



Scotty Rod Holder consists of a surface mount base, adjustable rod holder and four #6 x 1" phil truss stainless steel screws. A #2 phillips head screwdriver is needed (not included).



Bolt the pedestal directly to the bottom of the swivel seat. Four 1/2" screws and wingnuts are provided.



Orient the base so the "Inboard" arrow is pointing toward the center of the boat. Secure base to the crossboard with the screws. This is a one-time installation.



Now slide base of the swivel seat (or base of the pedestal) into the mounts. Make sure that the spring loaded lever mechanism locks into place (up position).



### Oars & Oarlocks

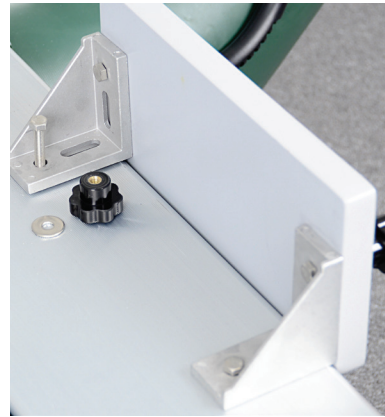
Each oarlock includes one oarlock pin, two bolts, two knurled knobs and two washers. First, attach the oarlock to the middle floorboard.



## ASSEMBLY & INFLATION



Bolt the raised oarlock bases at both ends of the aluminum bench through the pre-drilled 3/8" holes (2 at each end) using knurled nuts



Secure the brackets to the motor mount block using one set of bolts. Orient the block so it hangs about 1/2" below the floorboard. Then use the remaining bolts to secure the mount to the floorboard.



Slide the oarlock pin over the shaft of the oars, snap the oars shafts together and then insert the oarlock pin into the top of the oarlock. Tighten the clamp with the wingnut.



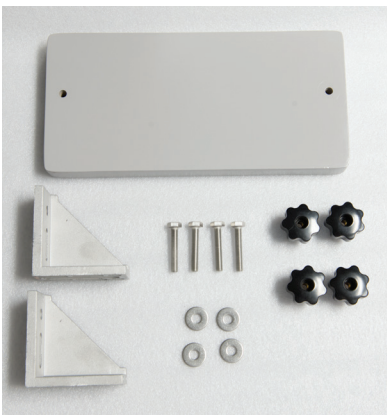
To prevent cavitation when using a short shaft gas motor. The completed setup should hang slightly below the floorboard, as shown. Tighten the knurled nuts and bolts before securing a motor.



Once the oar pins are inserted place, lock them in place using the slide rings as shown.



**Casting Bar (OPTIONAL)**  
Adds safe and secure support for stand-up casting and doubles as a convenient hand-hold while stepping aboard. Includes crossbar with padded cover, two upright leg bases, and two 4mm hex keys (one spare).

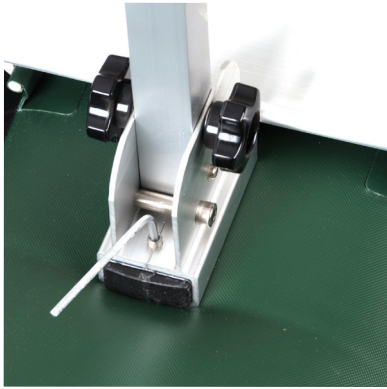


**375FC Motormount**  
Includes a motor mount block, two brackets, four bolts, knurled knobs and washers.

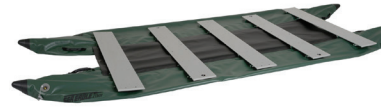


Insert the uprights into the crossbar. The height of the casting bar can be adjusted to one of three positions using the pre-drilled holes on the uprights.

## DEFLATION & STORAGE



Before attaching the casting bar to your boat, make sure that the FoldCat's pontoons are partially deflated. Insert the upright bases over the underbars in the bow and tighten the set screws at the base using the hex key.



As you deflate, it can be helpful to push the pontoons under the floorboards.

## DEFLATION & STORAGE

Although PVC material can become brittle in extremely cold temperatures, you can still safely store your Sea Eagle in them so long as you avoid dropping it and do not subject it to any sudden impacts.

If you're planning to leave your Sea Eagle outside, be sure to keep it raised up off of the ground. It's also a good idea to keep it covered so that it is not directly exposed to berries, leaves, rain, sunlight and other elements. Sea Eagles that are left in water will most likely have to be emptied from time to time.

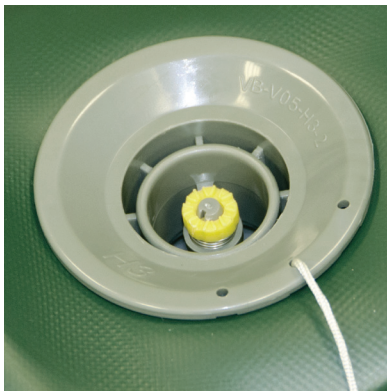
Make sure that your boat is dry before storing your FoldCat for more than a few days, to remove any excess moisture that could cause unsightly mildew. Choose a cool, dry spot when storing in an enclosed area like basement, closet or garage. Before you begin the deflation process, remove the seats, rod holders, casting bar and motor mount.



Start by folding the pontoon ends toward the middle. Roll the boat forward pushing any excess air out of the boat as you go along. When you're finished, tuck the bow ends neatly underneath.



Place the hull at the center of the opened boat bag and wrap the boat with the narrow flaps first. Lash down with the nylon straps to secure and repeat this process with the wide flaps and nylon straps.



To deflate, remove the cap and press the valve stem down and clockwise into the open position. Release around 50-75% of the air from each chamber before fully deflating. Leave the valve open so excess air can be pushed out as you rollup the boat.

## TROUBLESHOOTING & REPAIRS

If your boat is losing air it doesn't necessarily mean that its leaking. For instance a boat that is inflated late in the day with 90° air may cool 20° overnight. The cooler air will exert less pressure on the hull and the boat will appear softer the next morning.

When there has been no variation in temperature and your boat is losing air then it is time to start looking for the leak.

The first thing you should do when looking for a leak is to actually look at the boat. Visually inspect the boat from a few feet away and if necessary, flip it over and closely check the outside. Any large leaks when your boat loses a considerable amount of air should be clearly visible.

Be sure to check the tightness of the one-way recessed valves as well and if necessary, tighten them with the valve wrench included in the orange repair kit canister.

If you have a rough idea of where your leak is but can't see it, you may want to try listening for it as you may be able to hear the air escaping and pinpoint the leak.

Other troubleshooting techniques you can try to locate the leak is to dowse/spray a mix of dishwashing liquid over suspicious areas. The leak may produce bubbles that will pinpoint the location of the leak.

Although our Sea Eagles are very rugged and tough, you may still experience the occasional puncture through use of your boat. Fortunately most repairs are fairly easy and only take a few minutes.

For an extensive repair please contact us directly for assistance or a quote to have it sent back and repaired at our facility. Repair fees start at \$75.00 and do not include return shipping charges.



### Repair Kit

All Sea Eagles come standard with this repair kit which includes both PVC patches and PVC glue. Repair kits that are included in boat package purchases also include the recessed valve adapter and valve wrench.



### PVC Based Glue

For repairs on our boats you will need to use a PVC based glue.



### Repair: Pinholes

Deflate your boat and thoroughly clean and dry the area that is to be repaired. For small punctures less than 1/8" apply a small drop of glue and allow 12 hours to dry.



For immediate use allow 30 minutes to dry and then inflate the compartment with the repair only 3/4 full and be sure to make a more permanent repair later.

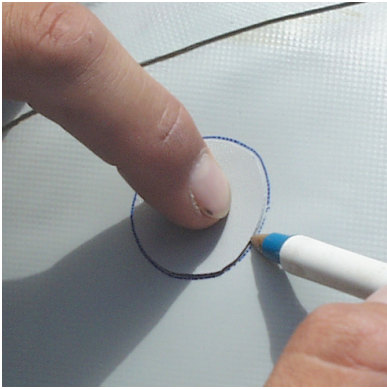


### Repair: Patching

Leaks larger than a pinhole can be patched. Most patches can be done in a few minutes, but we do offer a repair service for more complex jobs out of warranty.



# TROUBLESHOOTING & REPAIRS

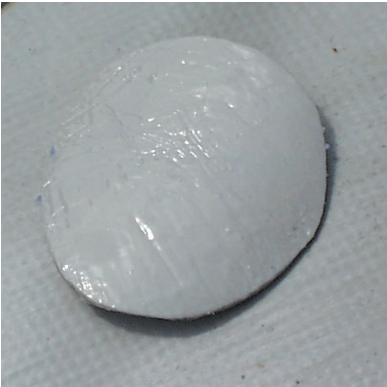


Using a pen, trace the outline of your patch which should be large enough to overlap the damaged area by approximately 1/2". Angle the pencil inward a bit so that the ink will be covered by the patch later.



## 2-Part Adhesive

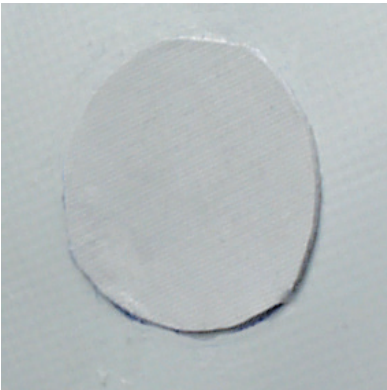
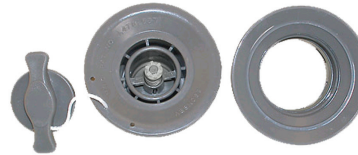
The adhesive that comes standard in your repair kit works for most repairs and installations, but for more detailed and extensive repair we recommend a 2-part PVC adhesive.



Apply adhesive to the dull side of the patch and around the area to be repaired. Coat the affected area lightly but completely with glue. If available, heat the glued surfaces with a hair dryer.

## Valve Replacement

DO NOT change out the valve unless you are sure it is broken. In most cases the valve will not leak. Because the base of the valve is built into the boat it cannot be replaced without cutting the chamber open.



Place the patch on the damaged area and then press down firmly. Allow to cure for at least 24 hours.

Suggested tools include channel lock pliers, valve wrench (included with your repair kit) and piece of repair material (also found in the repair kit).



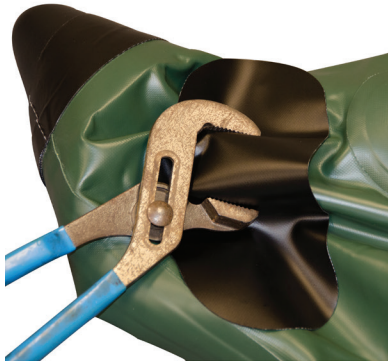
A temperature of 160° degrees will activate the adhesive. **NEVER** use a heat gun on your boat.



Inflate the chamber to full pressure if possible and loosen with the valve wrench by turning it counterclockwise. Deflate the chamber and unscrew the valve body from the base.

**TIP:** Check our website at [SeaEagle.com/Instructions](http://SeaEagle.com/Instructions) for a demonstrational video on this process.

## TROUBLESHOOTING & REPAIRS



Place the material in the jaws of the channel lock pliers to protect the hull material. Once the body of is unscrewed from the base, pull the body from the opening and insert the replacement base. The opening is very tight, so you may have to pull on it hard.

## OPTIONAL ACCESSORIES



### Honda BF2.3 Long Shaft Gas Motor (OPTIONAL)

One of the world's lightest four-stroke outboards. The Honda BF2.3 is so light, it rivals many two-stroke 2HP engines and electric motors, without the battery. While still maintaining Honda's reliable, efficient 4-stroke design!

## OPTIONAL ACCESSORIES



Sea Eagle offers a large array of accessories for your FoldCat.



### Torqeedo Travel 1003s (OPTIONAL)

Delivering the power and performance of a 3HP gas motor, the Torqeedo Travel weighs just 29.5 lbs. Please specify motor before ordering as the 375FC takes the 1003s (short shaft) model.



### 3M Marine Cleaner (OPTIONAL)

We all try to keep our boats clean, but there are some stains you just can't avoid. 3M Marine Cleaner & Restorer can remove the toughest stains from mud, bird droppings, oil, and many others.



### Minn Kota Motors (OPTIONAL)

Minn Kota Motors are the most reliable electric trolling motors on the market. These motors run off a 12v deep cycle marine battery (which is not included or sold by Sea Eagle)



### Personal Flotation Devices (OPTIONAL)

U.S.C.G. approved. Life jackets, paddling vest, PFD Belts available in various sizes.



### Battery Power Center (OPTIONAL)

Allows trolling motor leads and charger leads to be connected without opening the box. Built-in battery meter includes two 12-volt accessory plugs and three manual reset circuit breakers. Fits group 24 and 27 size batteries.



## BOARDING THE FOLDCAT FROM THE WATER

If you go for a swim, go diving or fall off of the FoldCat, the easiest way to reenter is on the opposite side of the motor. **Never** try to climb back onto the boat where the motor is attached. Follow these steps to get back onto the boat safely and easily.



Swim to the bow and grab the carry handles.



Swing one leg over.



Grab the 1st slat.



Hoist yourself up.



Begin to pull yourself up.



You're ready to go!



Take hold of the 2nd slat. Continue pulling yourself on board.

**Sea Eagle Boats Inc.**  
19 N. Columbia Street, Suite 1  
Port Jefferson NY 11777  
631-473-7308  
1-800-748-8066  
[staff@seaeagle.com](mailto:staff@seaeagle.com)